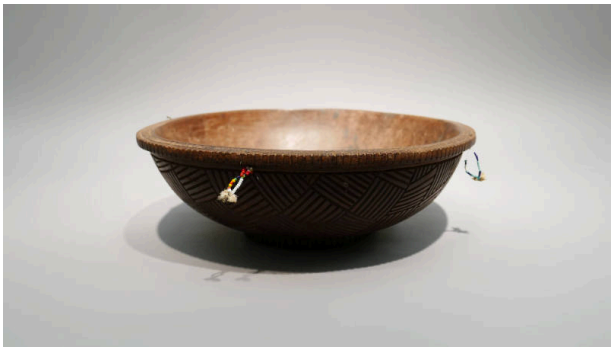


Basic Detail Report



Bowl

Date

20th Century

Medium

Wood, beads and feathers

Description

Based on the general style of this bowl and its morphology, it is most likely that it originally hails from the Marquesas Islands in French Polynesia. The design on the underside of this bowl is carved in a unique crosshatch pattern which may be indicative of a more contemporary manufacture, an attribution further supported by the plastic beads decorating the bowl's tassels.

Dimensions

4 3/8 × 16 3/4 × 14 7/8 in. (11.1 × 42.5 × 37.8 cm)