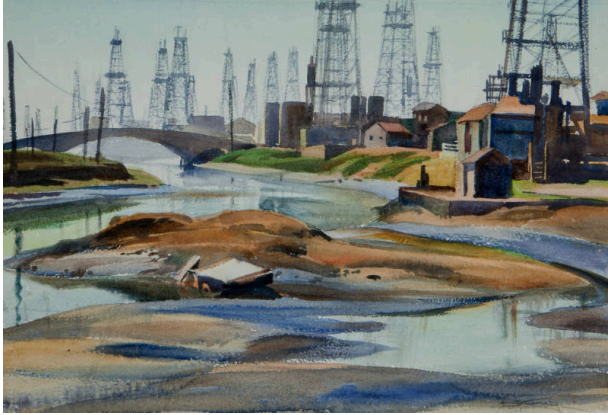


# Basic Detail Report

---



## Near Playa del Rey

### Date

1930s

### Primary Maker

Emil Kosa Jr.

### Medium

Watercolor on paper

### Description

Emil Kosa Jr. began taking art classes at a young age and once he was in his late teens decided to become a professional artist. In the 1930s, Millard Sheets encouraged Emil Kosa Jr. to pursue a national reputation as a California watercolor artist. Although, he worked with pastels and pencil drawings depicting figurative subjects, Kosa is best known for his representational watercolors and oils as shown in *Near Playa Del Rey*. He was among the first California Style watercolorists to bring attention to the West Coast watercolor style. However, many of his paintings, such as this one, reflect a more somber tone which is a stark contrast to what is often associated with Californian landscapes. This painting reflects his proficiency in landscape paintings and backdrops. Also, the prominent oil derricks and other urban elements suggest that this painting is part of his series focusing on industrial matter.

### Dimensions

Approximately: 14 1/2 × 21 1/2 in. (36.8 × 54.6 cm) Framed: 24 3/8 × 31 1/4 × 1 3/8 in. (61.9 × 79.4 × 3.5 cm)