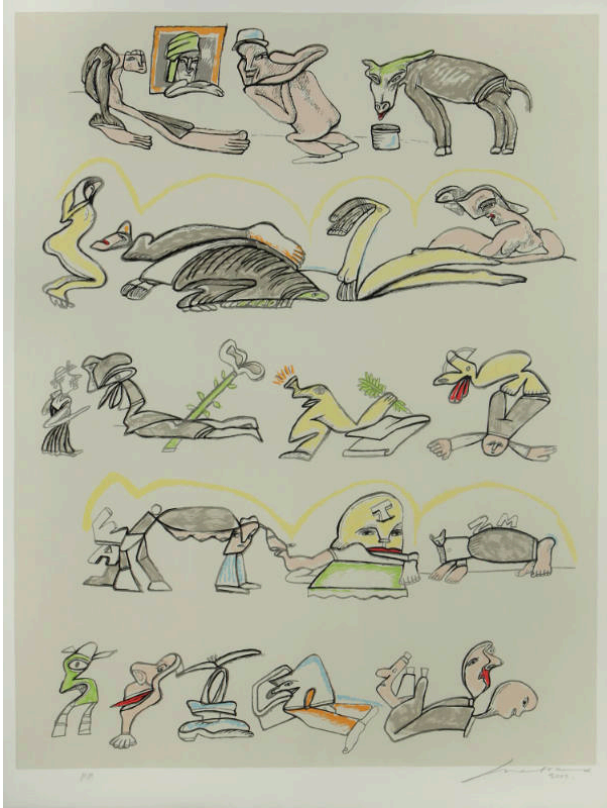


# Basic Detail Report

---



## Tiras comicas

**Date**

2002

**Primary Maker**

José Luis Cuevas

**Medium**

Serigraph

**Description**

In his drawings, Cuevas takes inspiration from the graphic works of Francisco Goya, Pablo Picasso, José Guadalupe Posada, and José Clemente Orozco, particularly those illustrating distorted animals and the corruption of humanity. The influence of their art is evident in Cuevas's "Tiras comicas," which portrays five rows of distorted human and animal figures. By depicting deformed figures, Cuevas communicates the isolation of human existence.

The P/P on this print indicates that it is a printer's proof.

### Dimensions

43 1/2 × 32 1/2 in. (110.5 × 82.6 cm) Framed: 53 3/4 × 43 × 7/8 in. (136.5 × 109.2 × 2.2 cm)