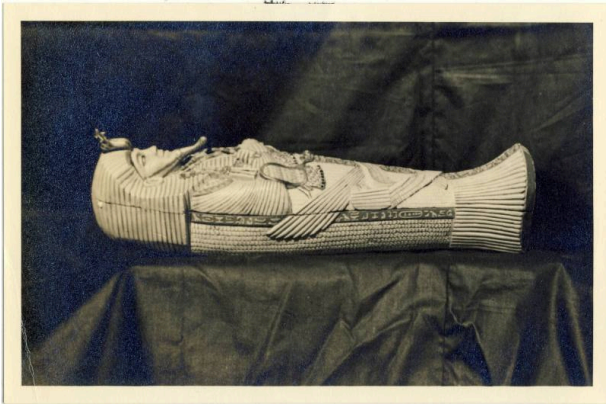


Basic Detail Report



Model King Tut Sarcophagus

Date

1930s

Primary Maker

Claire Doret

Medium

Photographic print

Description

This 1930s photograph features a miniature replica of King Tut's sarcophagus, most likely made by Swiss-born American Claire Doret, probably under the pseudonym of Hygia May. The miniature was created after the discovery of the actual tomb in the 1920s. Doret had moved to Los Angeles from Switzerland in 1920 to work as a dental technician, making her the first female in her profession on the west coast. A true Renaissance woman, she enjoyed painting, sculpting, wood carving, and making jewelry. One source indicates that Doret painstakingly worked on this piece for years using her dental tools, finally finishing in 1931. The result is a highly detailed and masterfully crafted ceramic sarcophagus and rather than a mummy, an anatomically correct skeleton (not visible in this photo).

Dimensions

5 7/8 × 3 7/8 in. (14.9 × 9.8 cm)