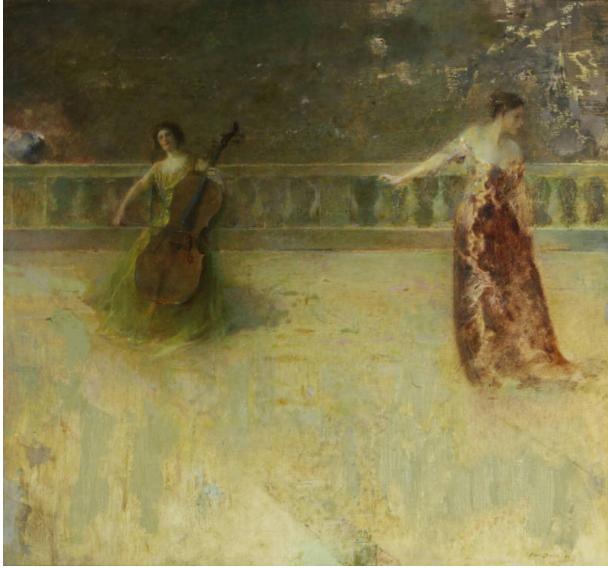


# Basic Detail Report

---



## The Dance—Twilight

### Date

c. 1890

### Primary Maker

Thomas Wilmer Dewing

### Medium

Oil on canvas

### Description

Thomas Wilmer Dewing (1851-1938) was an American Gilded Age painter active in the late 19th and early 20th

Centuries. He was an important member of the Tonalist movement, which used muted, natural tones to arouse a scene's mood rather than capture the fleeting impression of it through color, as Impressionism did. As with many artists of his time, including James Abbott McNeill Whistler (American, 1834-1903), who was his primary influence, Dewing tended to depict idealized, wealthy women of 30-40. Also like Whistler, Dewing had a particular interest in music, having been a member of the Boston Orchestra as a young man. Many of his subjects in his late 19th Century paintings are seen playing instruments or dancing.

### Dimensions

Overall: 22 x 24 in. (55.8 x 60.9 cm)