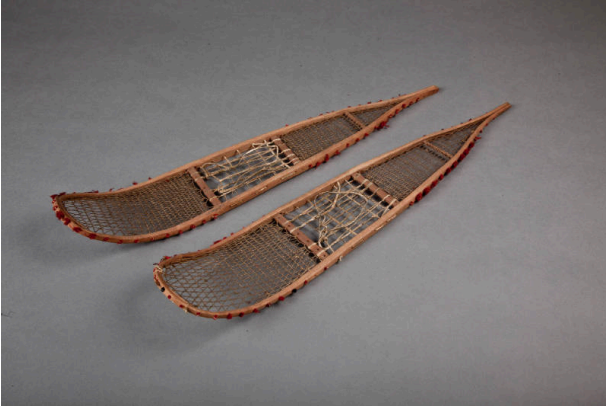


# Basic Detail Report

---



## Model Snowshoes

### Date

early 20th Century

### Primary Maker

Athabaskan

### Medium

Wood, fiber and leather

### Description

Model (one of two) of snow shoes: 23"L with webbing woven and narrow leather thongs.

### Dimensions

2 3/4 × 4 1/4 × 23 in. (7 × 10.8 × 58.4 cm)