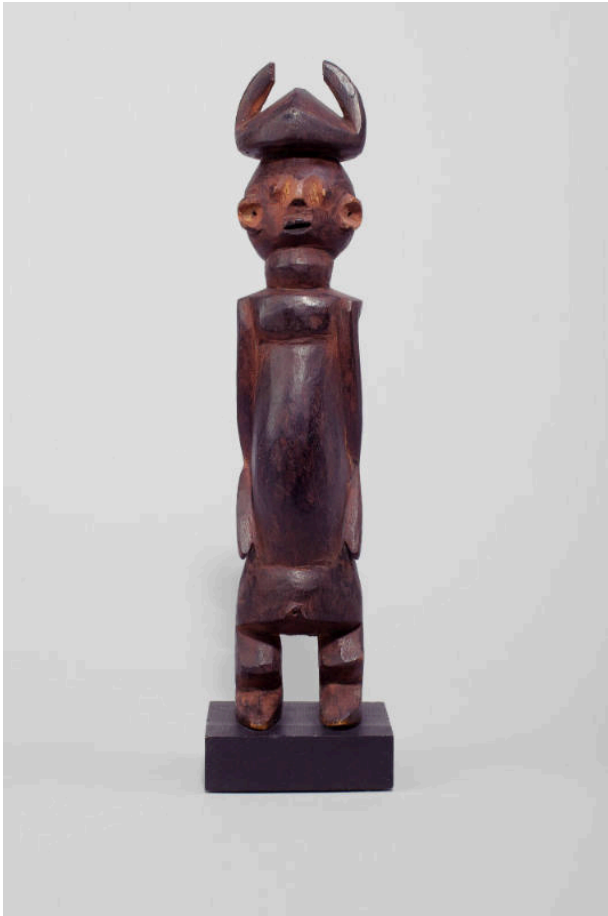


# Basic Detail Report

---



## Standing Figure

### Date

late 19th to early 20th Century

### Primary Maker

Chamba

### Medium

Wood, patina and camwood powder

### Description

Chamba sculptures vary in function, but many are utilized in ancestor and tutelary spirit worship. Typically like other eastern Nigeria groups, the Chamba sculptures serve as communication between the living world and the world of spirits. These figures sometimes have horns on their head and abstract or simple faces. Geometric facial patterns are attributed to supernatural power. The Chamba statuary has distinct stylized arms attached to the entire body or with wide hands and fingers splayed. Figures are sometimes placed on altars and serve as mediators

between the spiritual and natural world.

### Dimensions

15 x 3 7/8 x 3 1/4 in. (38.1 x 9.8 x 8.3 cm)