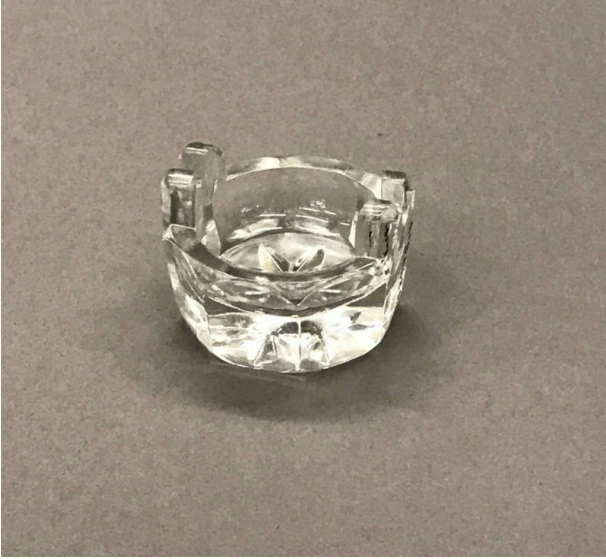


# Basic Detail Report

---



## Salt Dip

### Date

early 20th Century

### Medium

Glass

### Description

This beveled glass salt dip, also known as a saltcellar, is part of a set which was made in Germany. It comes from the home of artist Evylena Nunn Miller. Many of Miller's household belongings were donated to the Bowers Museum after her passing. An alternative to shakers, salt

dips were often placed on the dining table for people to season their food. The two grooves at the top of this piece were likely used to hold a small spoon for serving.

### Dimensions

1 1/2 in. (3.8 cm)