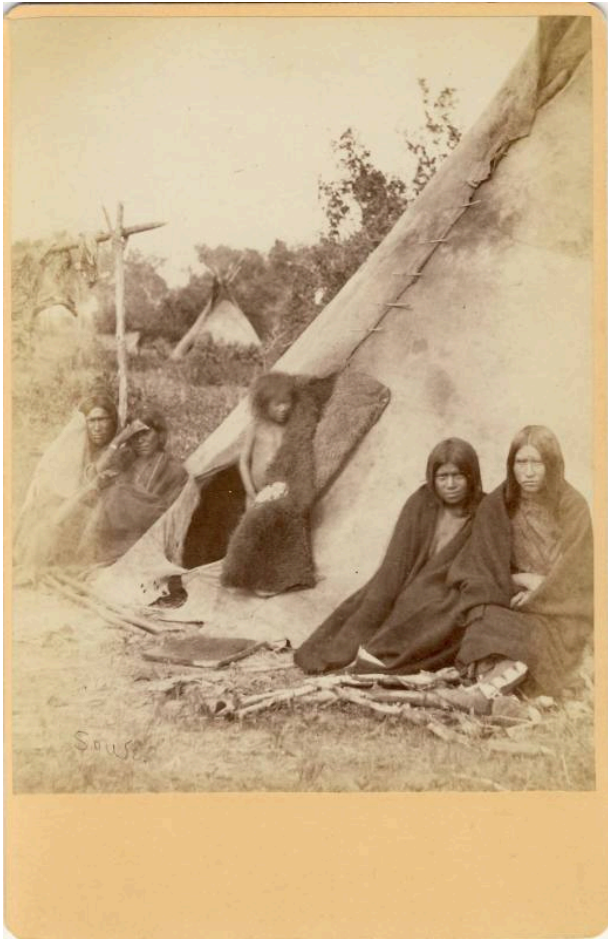


Basic Detail Report



Comanche Camp

Date

c. 1858

Primary Maker

William S. Soule

Medium

Photographic print

Description

Black and white portrait photograph of a Comanche camp. It was taken at Fort Sill, Oklahoma and dates to 1858.

There are five Native Americans in this photograph. Two women are sitting on either side of a round entrance of buffalo skin tepee. Coming out of that entrance is a naked child with wild hair. This photograph is mounted onto an orange board with the photographer's name, W.S. Soule, and location, Fort. Sills, printed on the back. Old remarks: Photograph album containing a collection of thirty-one original photographic prints of important named Indian

leaders and dignitaries. The prints were the work of photographer and documentarist W.S. Soule and were taken at Fort Sill, Indian Territories, about 1858. Photos are 6-1/2"H x 4-1/4"W. The album is 9-1/4"H x 7"W x 1-1/4" thick. The album cover is of faded green leather and metal fastening is broken. Paul Apodaca is holding and will number each print.

Dimensions

Overall: 6 1/2 x 4 1/4 in. (16.5 x 10.8 cm)